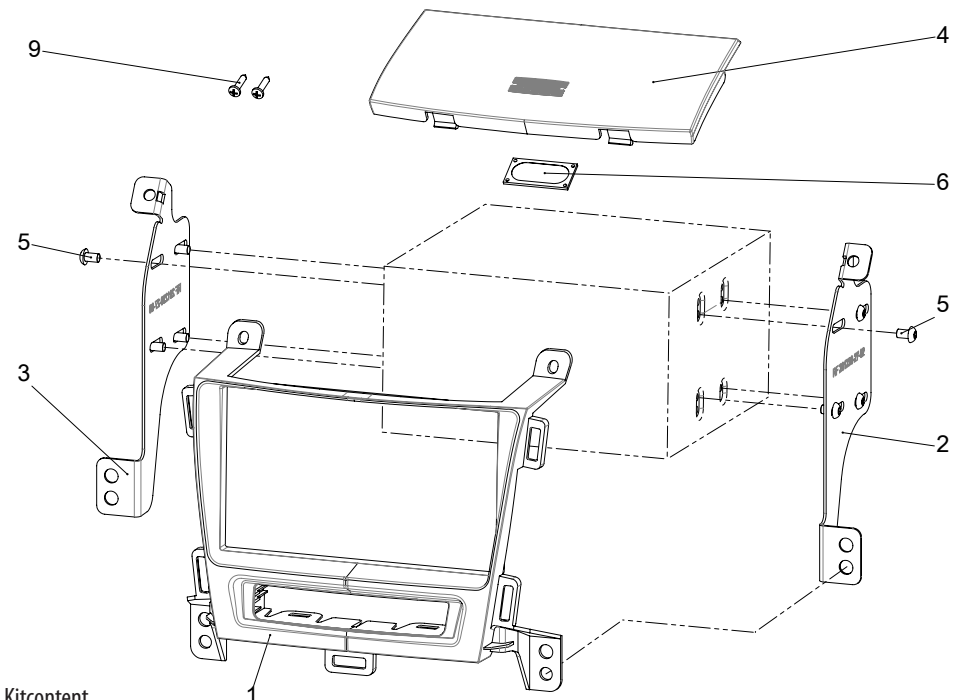


• Opel Zafira Tourer (P-J/SW/V) 01/2012 ->

colour / part-no.:
jet black CT23VX41
brown CT23VX42

Compatible with these double DIN devices

Double DIN Navigation



Kitcontent

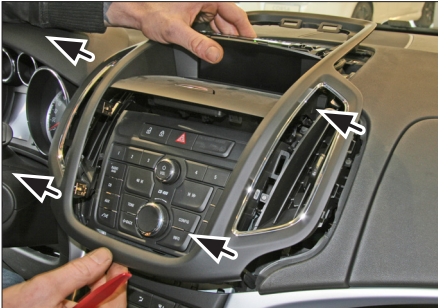
- | | | |
|----------------------------|-----------------------|--|
| (1) Facia Plate | (4) Blanking cover | (9) self-tapping convex fillister head screw |
| (2) Mounting bracket right | (5) Flat headed screw | |
| (3) Mounting bracket left | (6) Speaker | |



1. Unclip and remove top panel



2. Remove 4 screws



3. Unclip and remove center panel



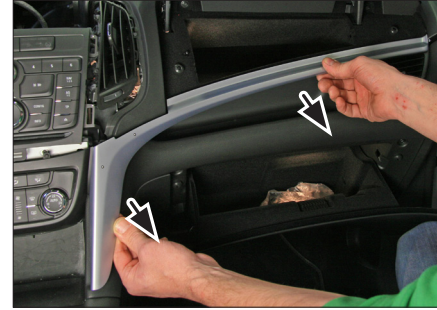
4. Unclip and remove left decor panel



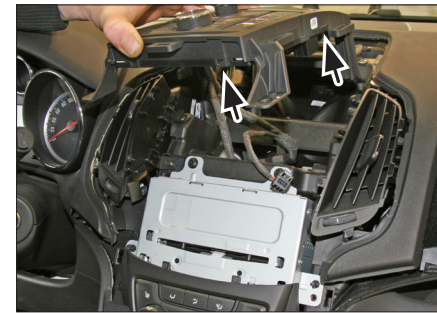
14. Fix all required circuit points

Fix double DIN head unit on dash board

Reinstall everything in reverse order to finish installation



5. Unclip and remove right panel



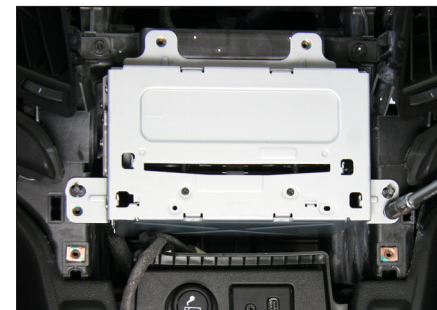
6. Remove screws of OEM head unit control unit

Remove OEM head unit control unit



7. Remove screws of air condition control unit

Remove air condition control unit

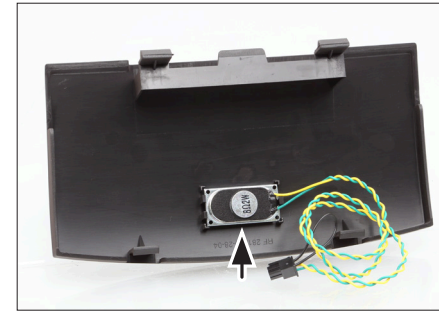
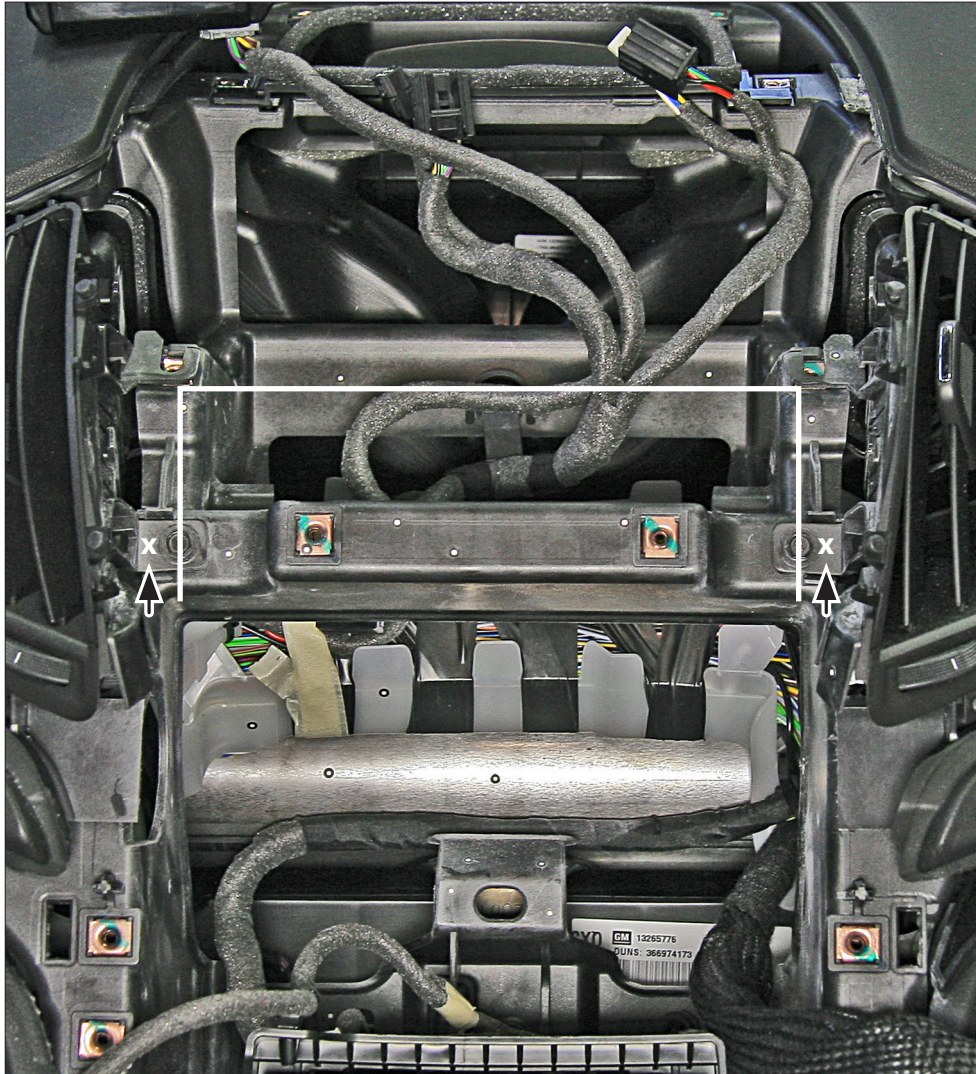


8. Remove screws of OEM head unit

Remove OEM head unit

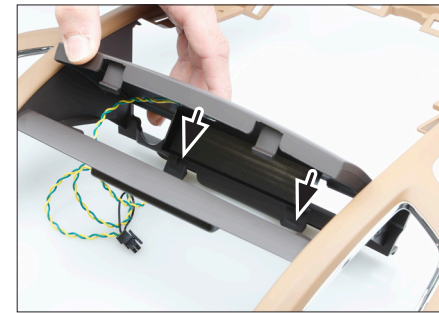
- Drill two holes (1,5 - 2mm) beside OEM airvent screws (see arrows and „x“)
Use 2 self-tapping convex fillister head screws to secure the air vents

Remove OEM screws of air vents. Cut away plastic in order to clear space for Double-DIN navigation (see white line)

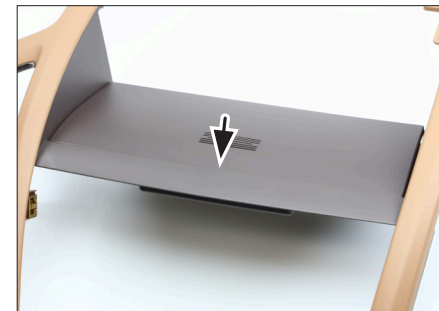


- Clip speaker into rear side of blanking cover (see arrow) until it snaps in

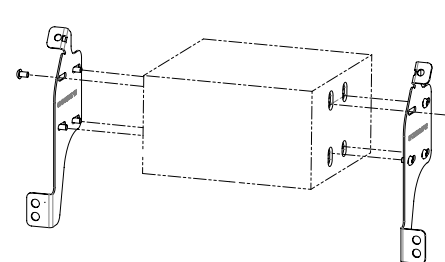
We recommend to use glue in order to fix



- Clip rear side of blanking cover into OEM panel



- Clip front side of blanking cover into OEM panel



- Mount mounting frames to double DIN head unit

*All installation work must be performed by a qualified professional installer only.
The manufacturer / dealer is not liable for any kind of incidental or indirect damages.*